

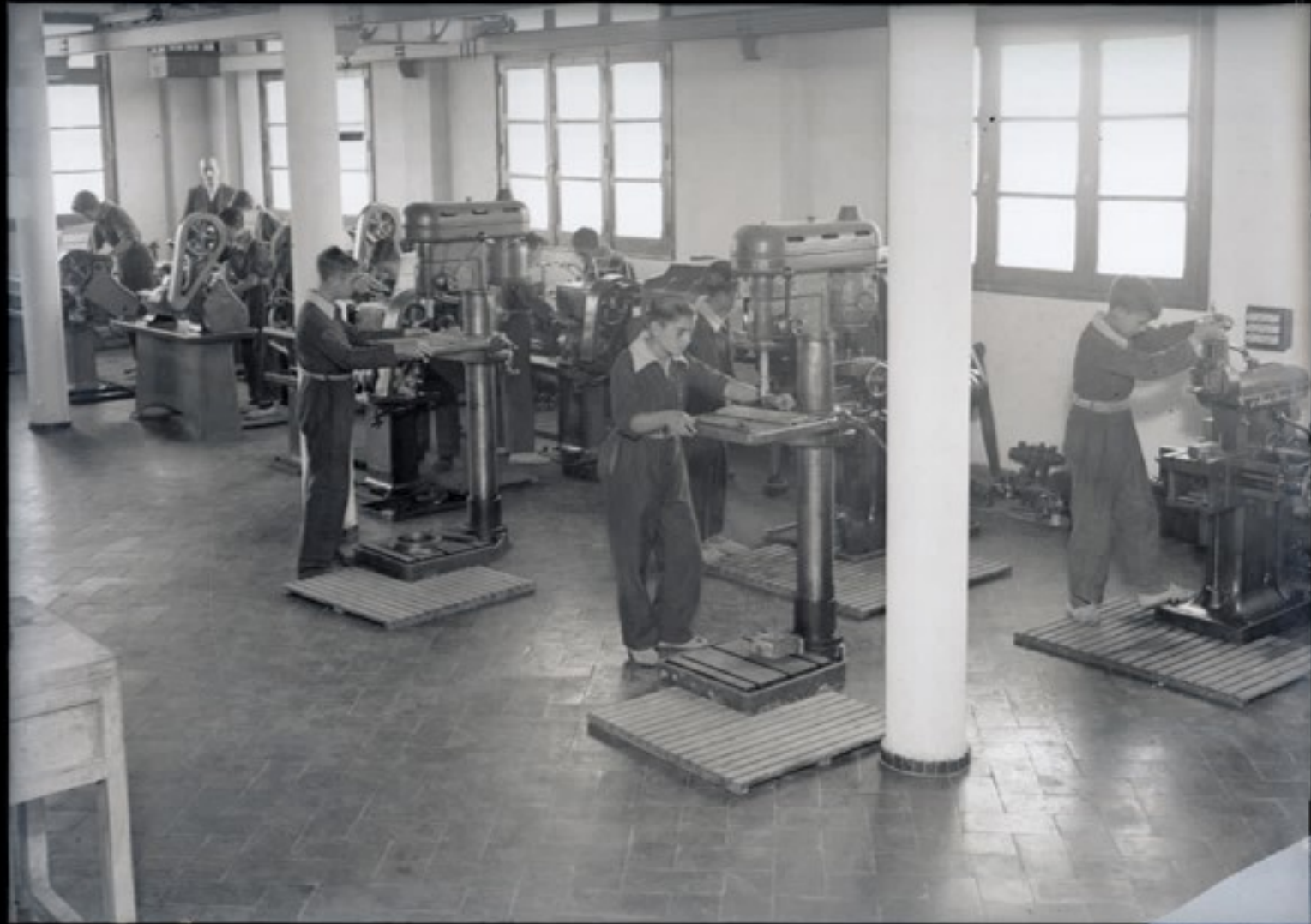


8.9











u lugar.





















159

LAMPISTERIA





Handwritten mathematical notes on a chalkboard. The text includes:

Handwritten mathematical notes on a chalkboard. The text includes:

Handwritten mathematical notes on a chalkboard. The text includes:

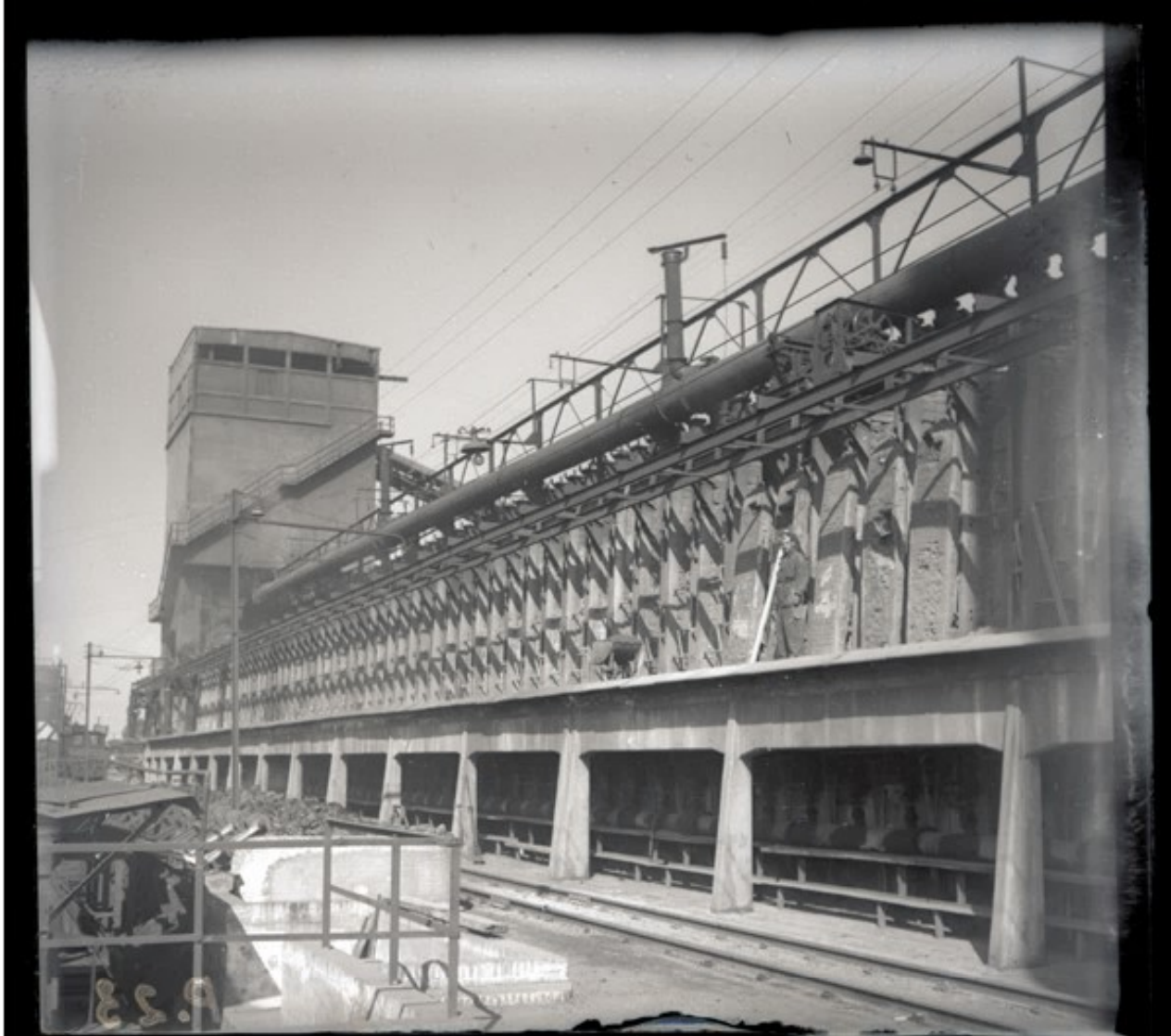
Handwritten mathematical notes on a chalkboard. The text includes:

Handwritten mathematical notes on a chalkboard. The text includes:





13-9



85.9





CENTRO
ENSEÑANZA MEDIA





X 491-04-1

X 8.9



629

1911-1912

9.30

1-10-1945





189

YHP1-01-1



58.9

1-21-1947



933

1-10-1947



439

1-21



1-10-1937

632





1-10-1944

9.37



638

1-10-1949



PEA - X

10-1-1



029-X

X4PI-01-1





MENEAP

9-11-9

12-15-42

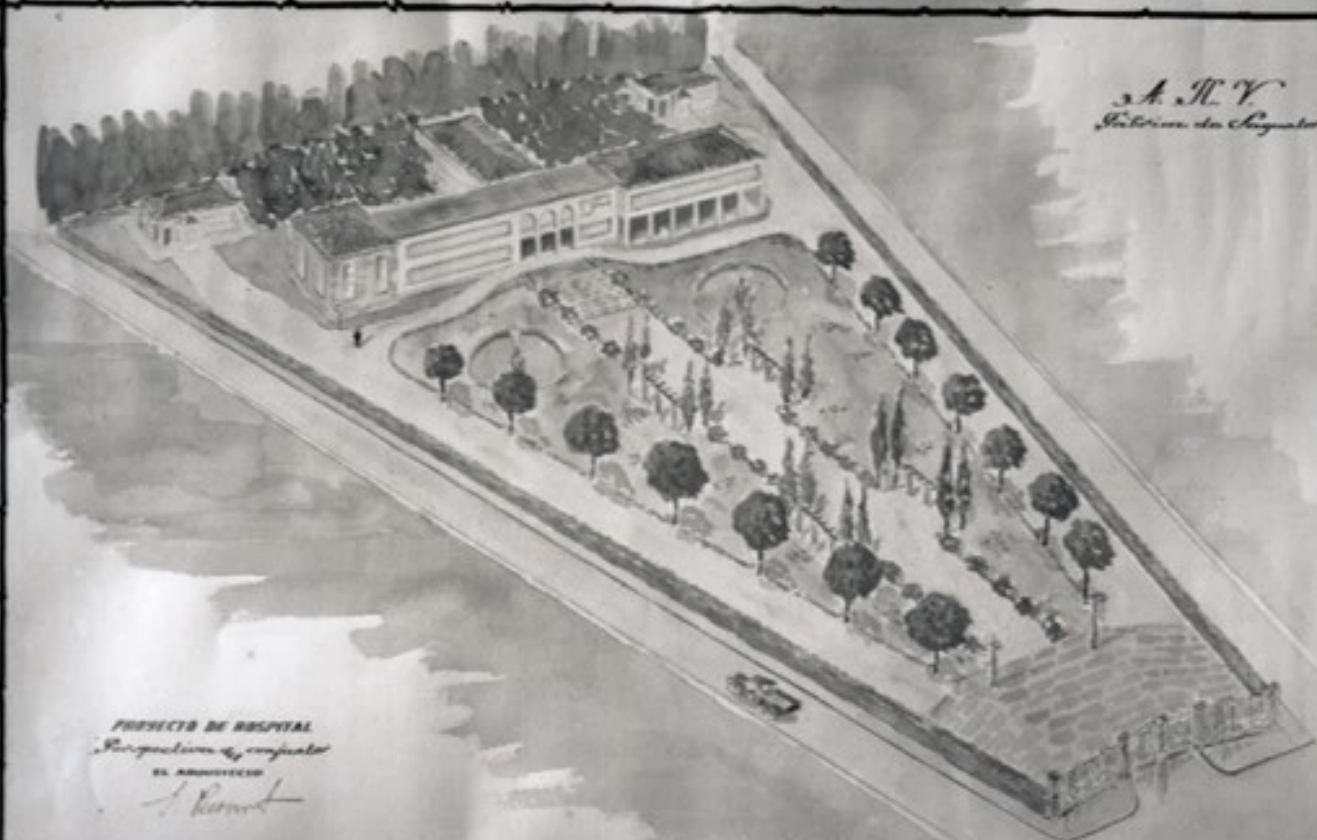


9-13

2-15-11

8491-1-P - 449

A. H. V.
Ingeniero de Sanidad



PROYECTO DE HOSPITAL
Prospectiva y conjunto
EL ARQUITECTO
A. Rovinsky



YO GERONIMO DE VILLAZ



Rey de Armas del Rey Don Philippe Nostro Se-
 ñor Quarto deste Nombre Rea. Certifico y hago en-
 tera Fe y Credito a todos quantos esta Carta vieren
 como en los Libros de Armeria y Copias del. en a-
 jes que estan en mi poder que Blasonan de los Isi-
 najes y Armas de los Solares y Casas Nobles de es







918



6-20









8-23

1-1918





over
the
road

6-20





27-6

6-18







6-20





1919

quartz



El indisciplinado debe eliminarse de raíz

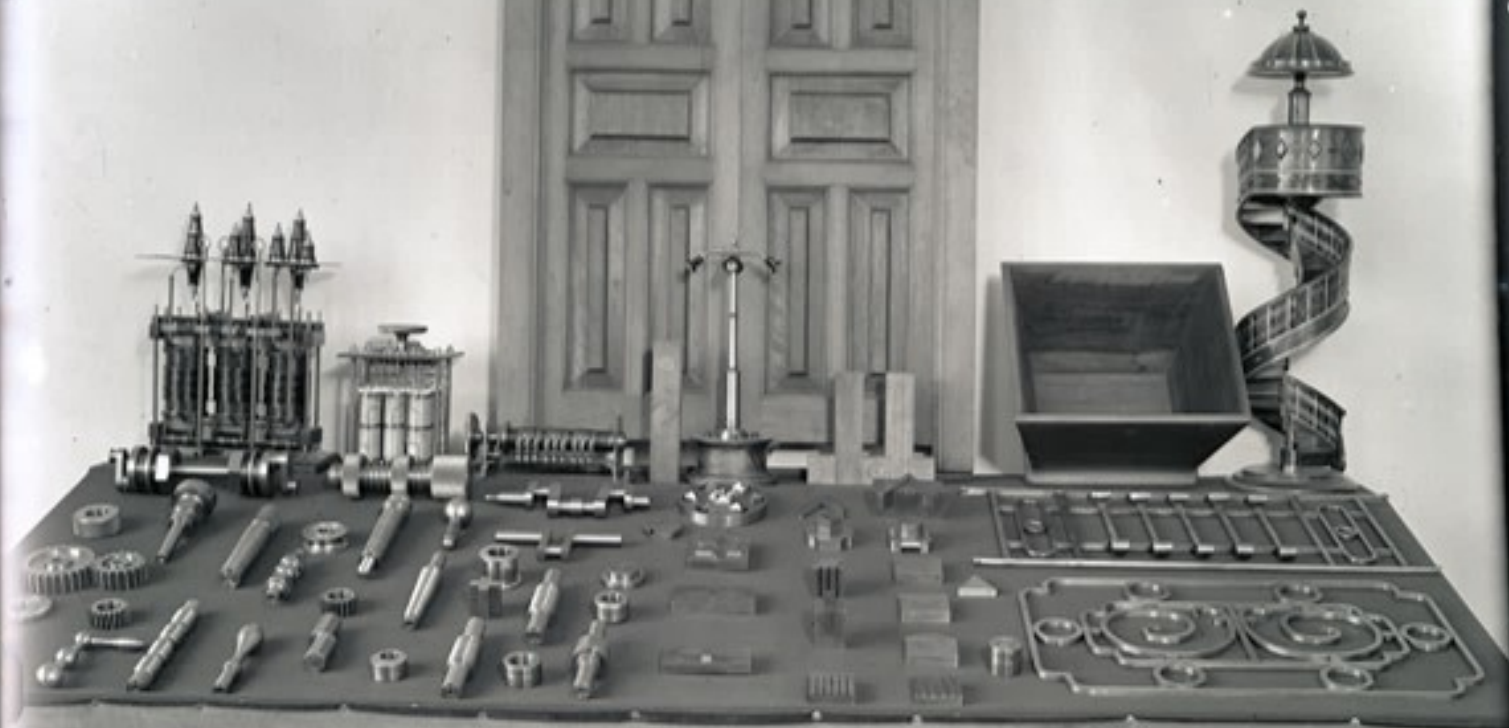
para que no perjudique a los demás.



618
Mar 1895

para

lique a los a



X-4-21



b-22

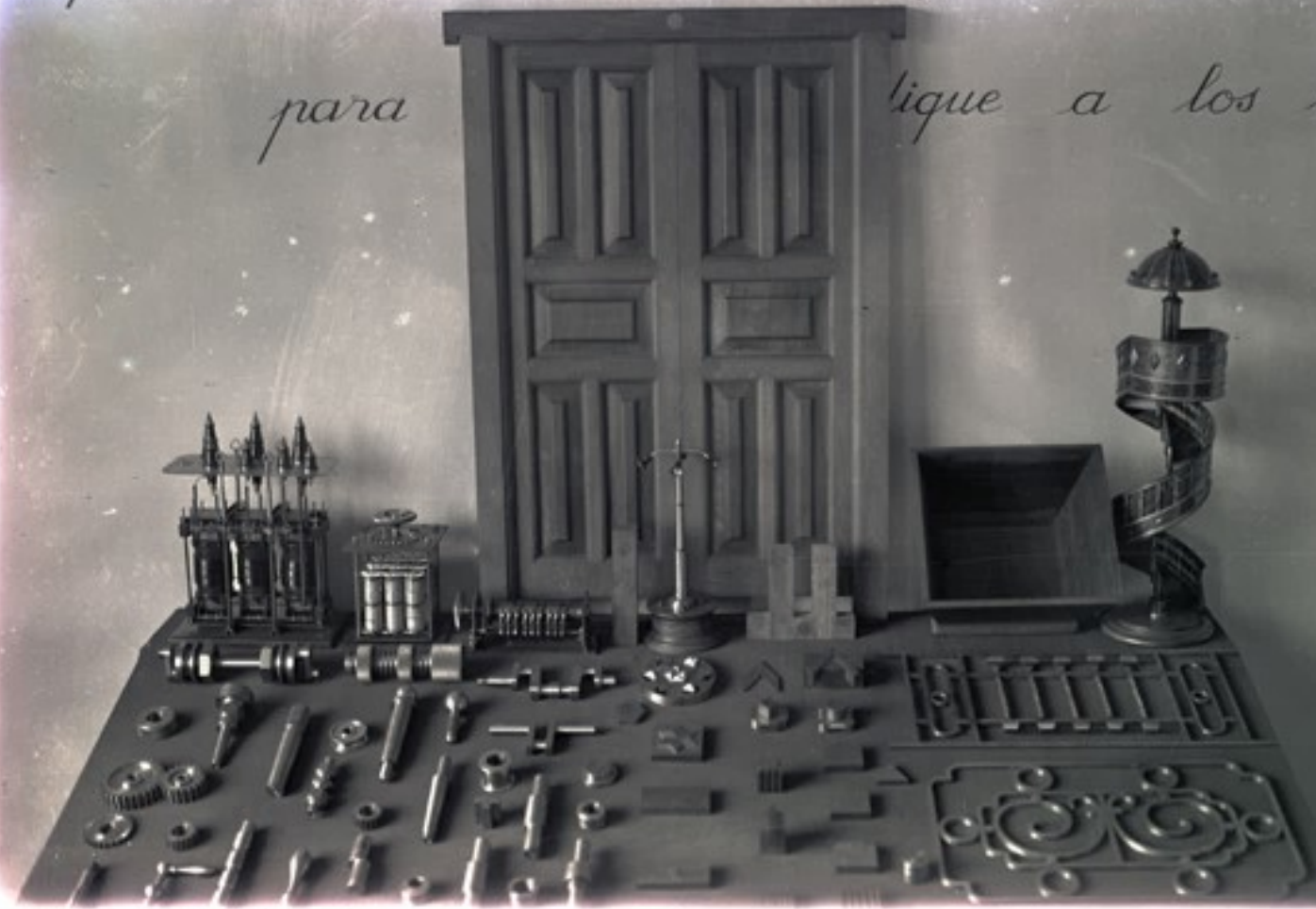
19-2-1918



disciplinado debe eliminarse de raíz

para

lique a los den



10-4-48

para

lique: a los e



6-28



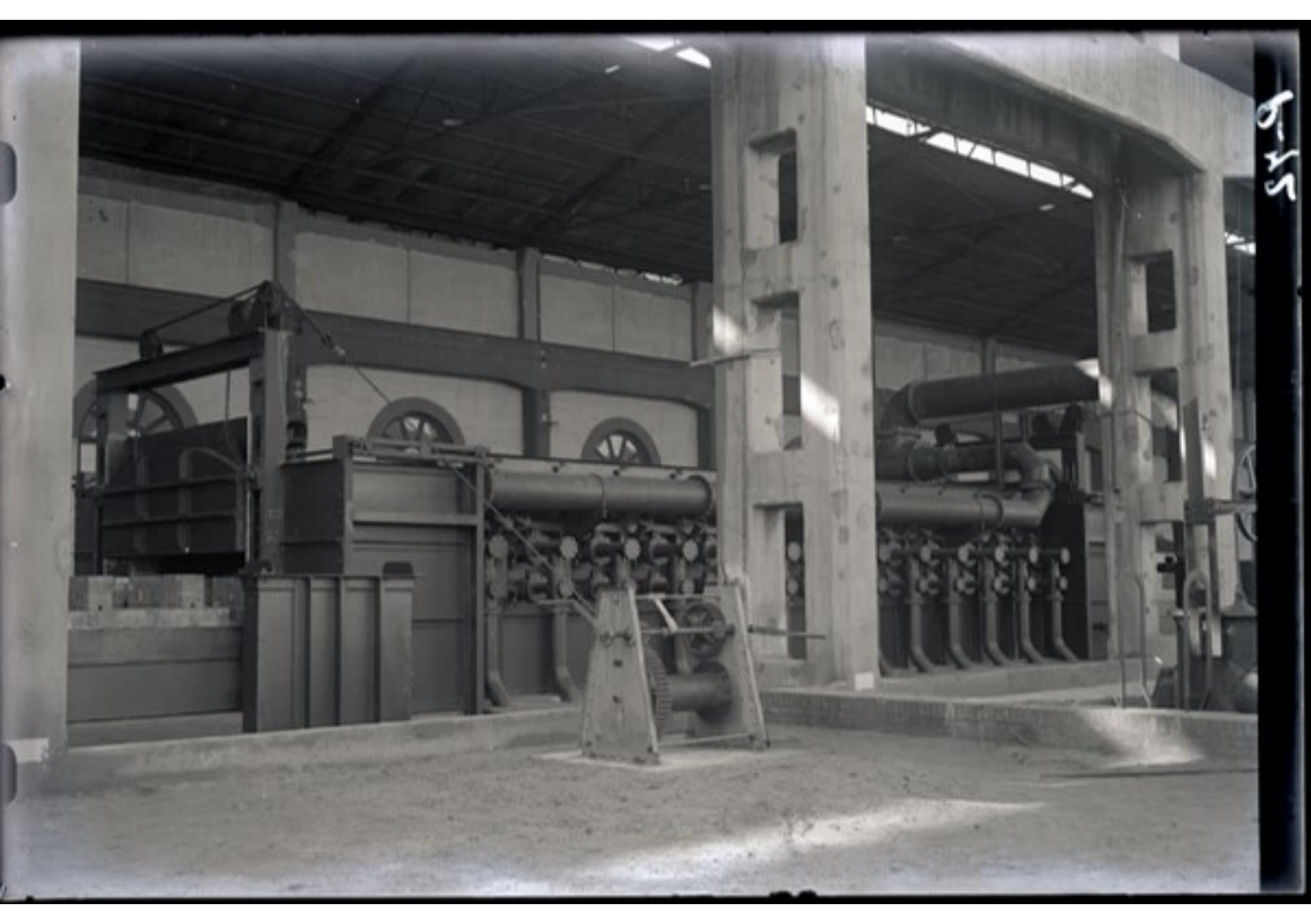
MARQUES DE CHAVARRI

MARQUES DE CHAVARRI



6-10





6-15



6-13

41-9



10302

6-42



6-10-14





6-11-19

41-9





6-4-18

20-2-1848



8-2-53

8-2-53

1914

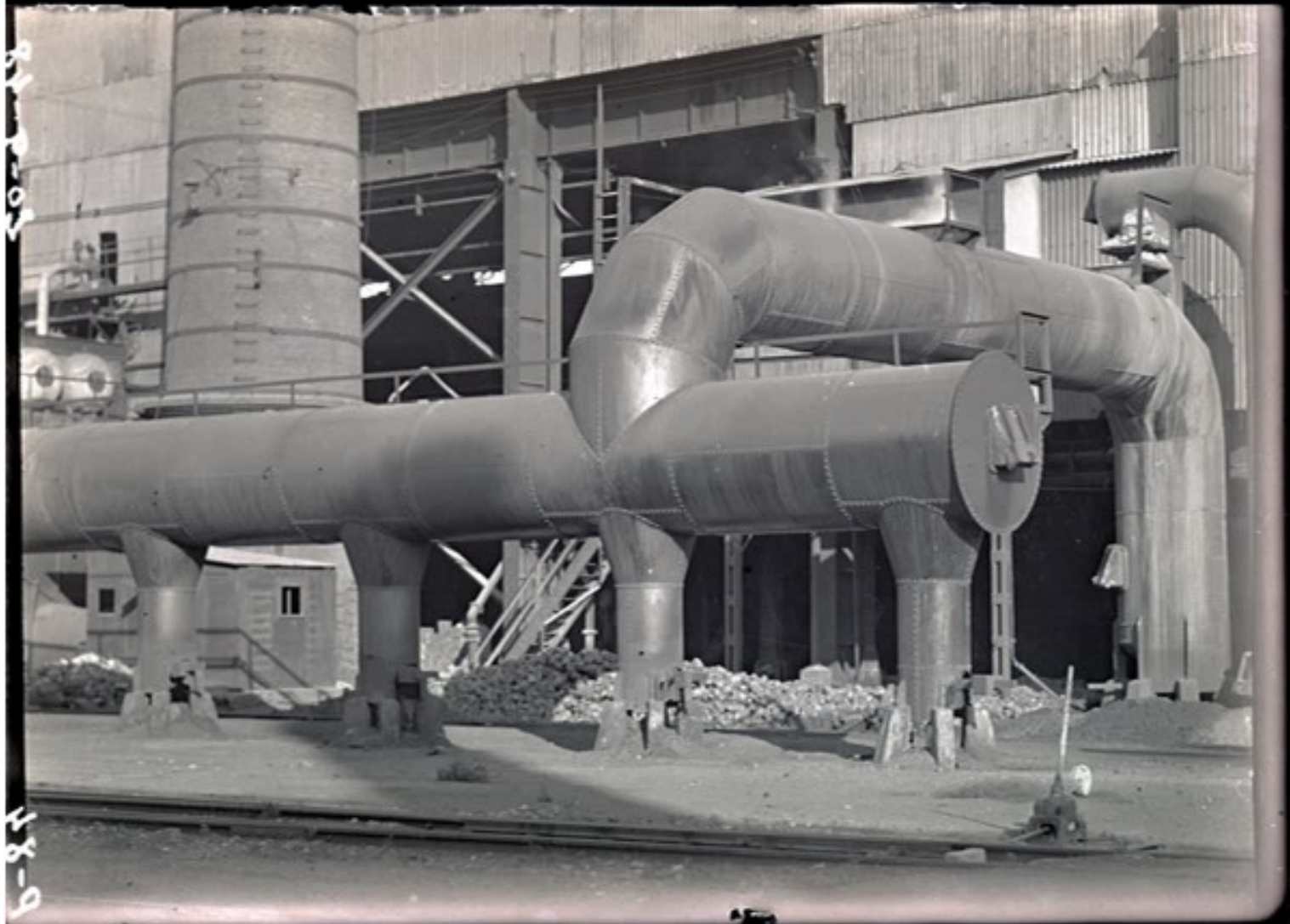






58-A





10-20-20

18-9





5. 22

3.10.1943

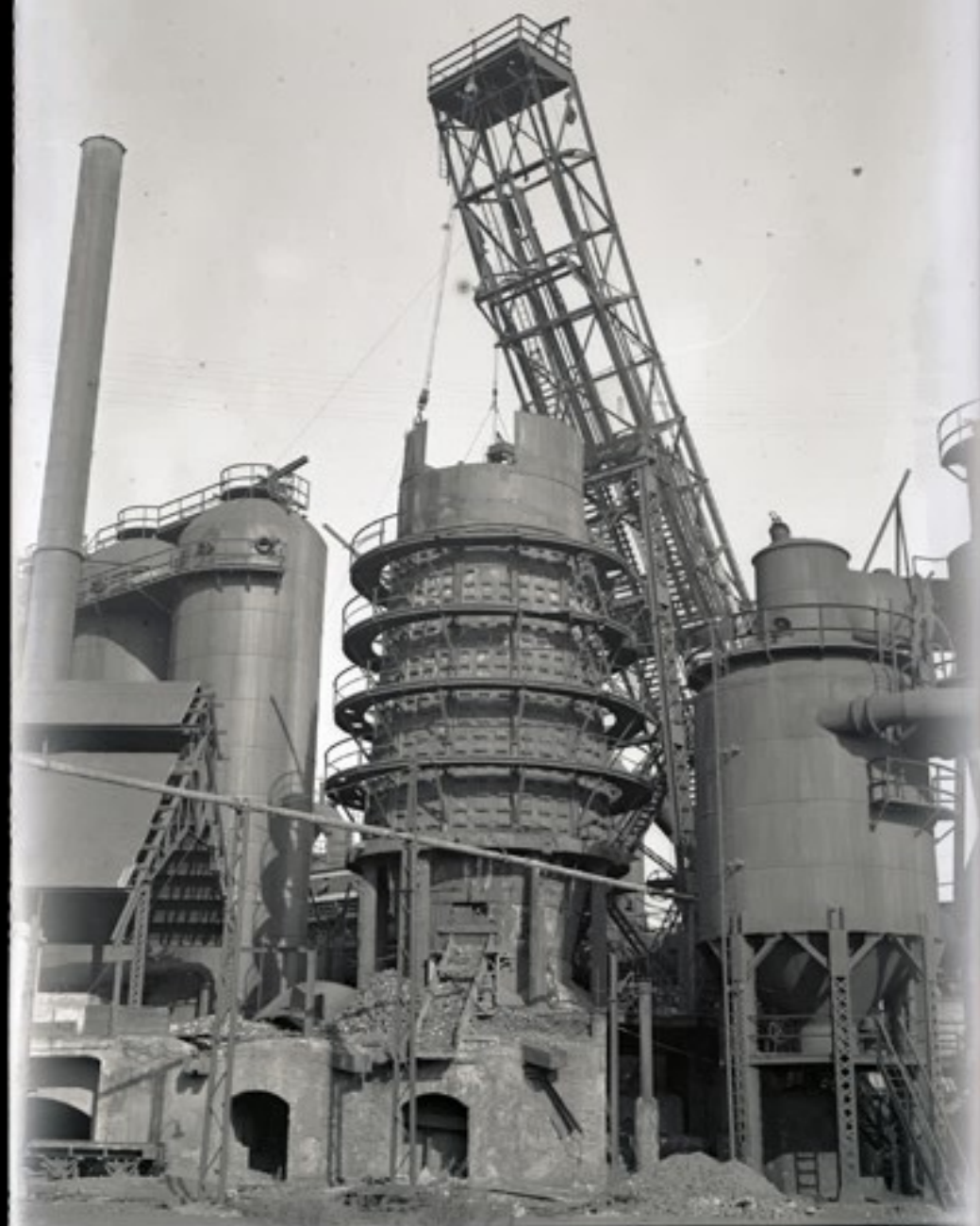


2-10-1948



2-10-1948

989



2-10-1948

989



69

2-10-1948

19-9

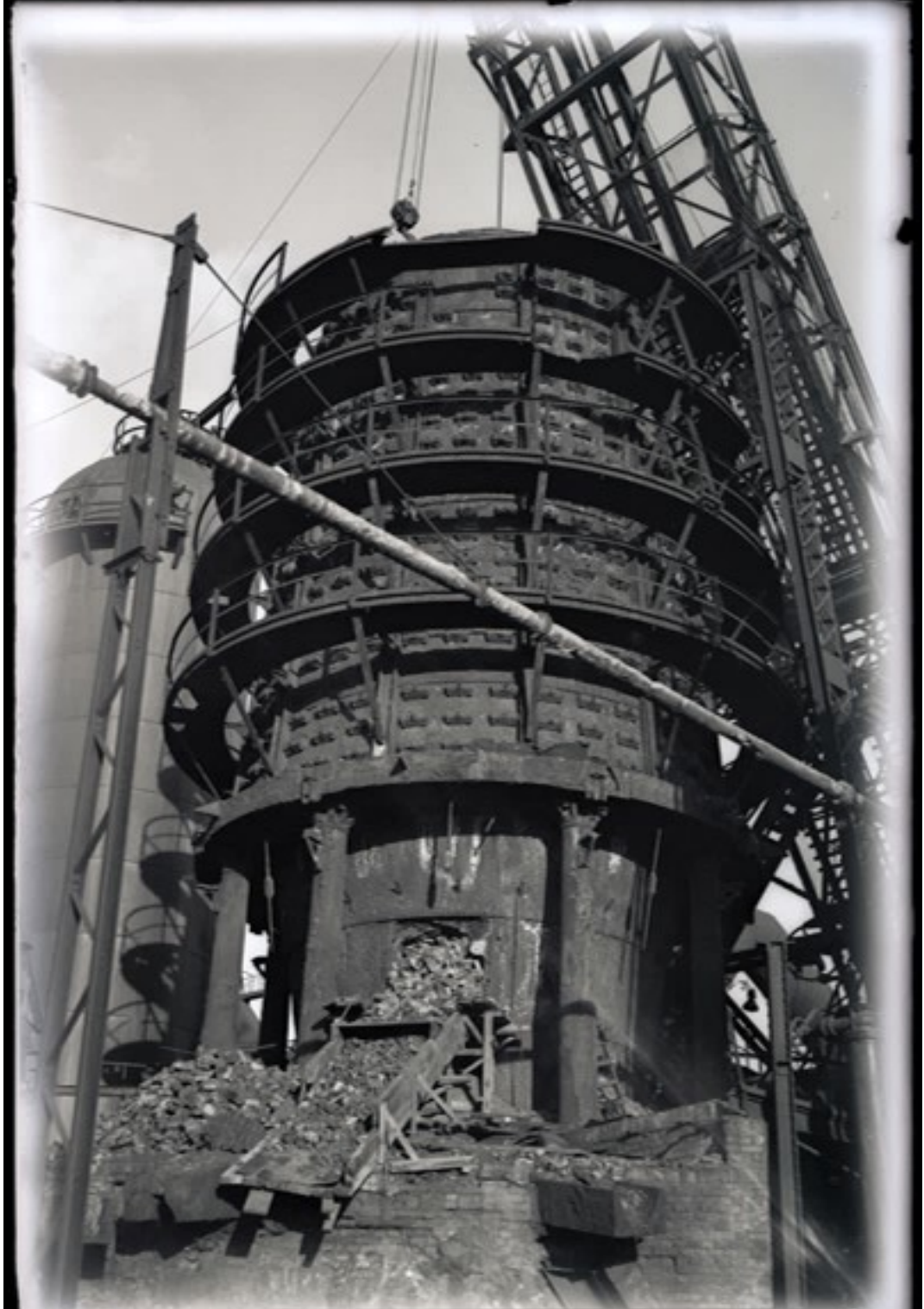


YIP-9-PS-~~1888~~
1888



100-10-83

89-9



8491 11-85

89-9



6-41

58-10-1848



88-10-1843

6-22



8-10-1918

L-20

4901-11-9

604





828-11-51

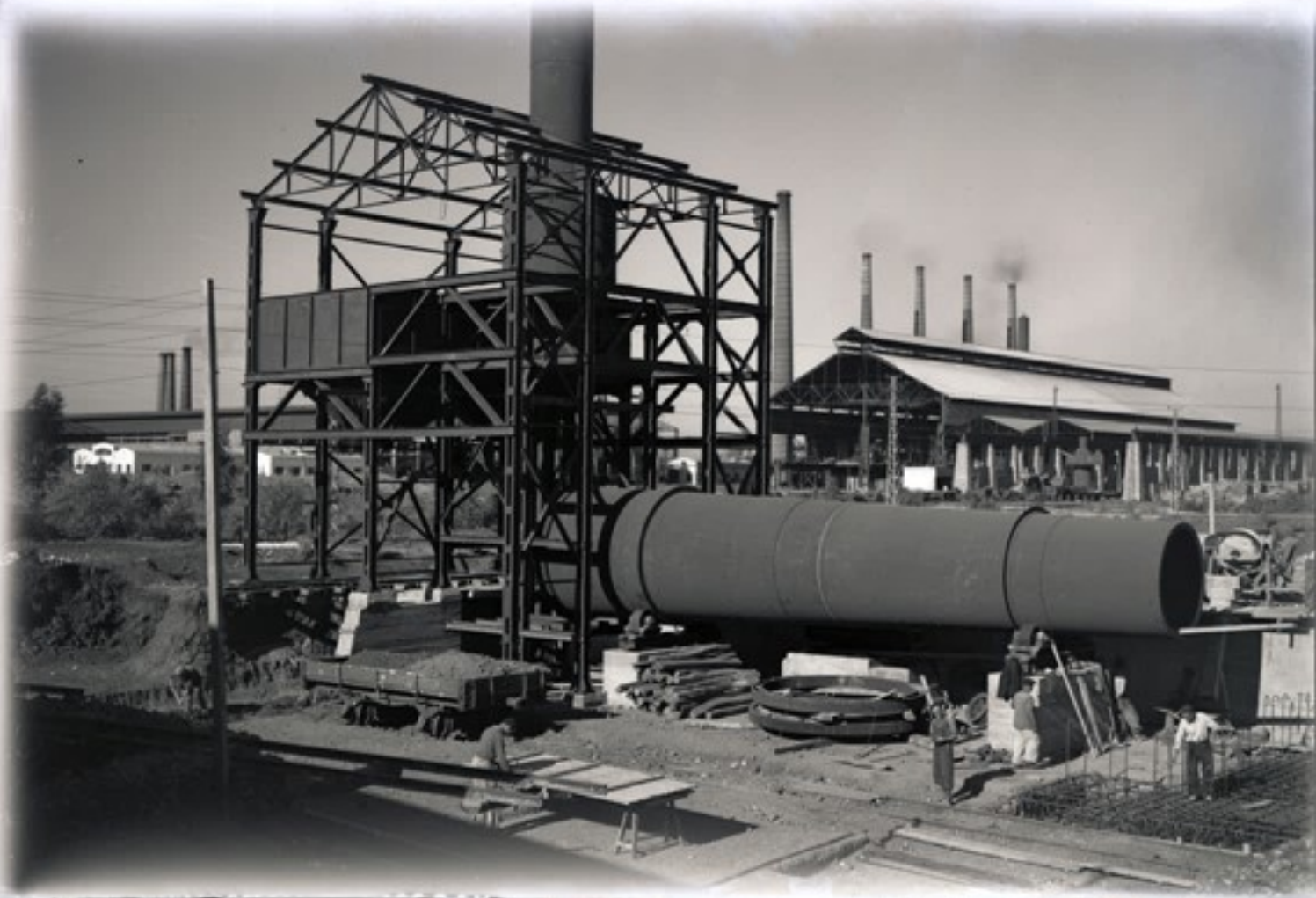
40-9





0-10-1921

10-1-1921



0 1 1 1

15 11 1943









6-102

11-11-1911



17th Nov 1958

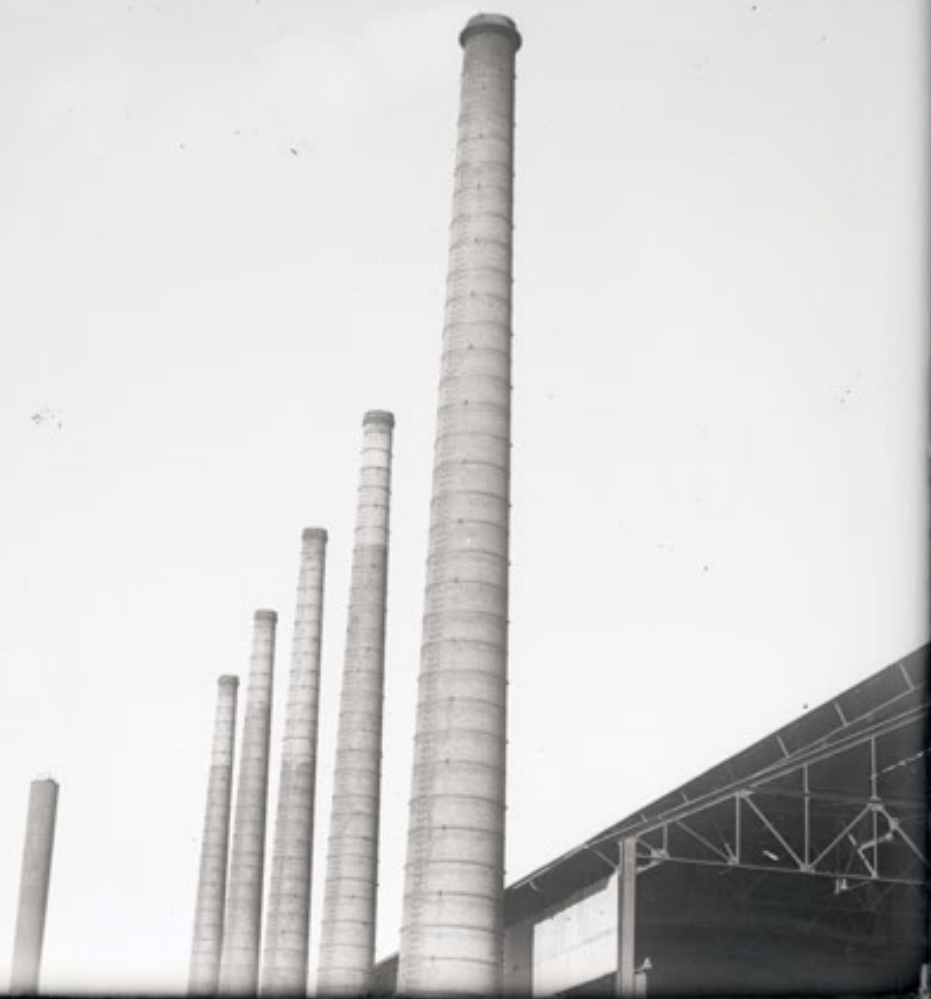
9-106



K-191-11-71

401-8

801-9





6-110

8291-11-21





D-111

17-11-1948

6-115

87-11-1648





Photo 6-113

SI-11-14478



6-114

SF-11-1448





8-11-1848

8-11-1848



B-111

SP-11-1418



8991-51-5

6-11-6-118
9-11-9-24-9





6-150

5-15-1849

8091-51-5

191-9





5-15-1948

9-155

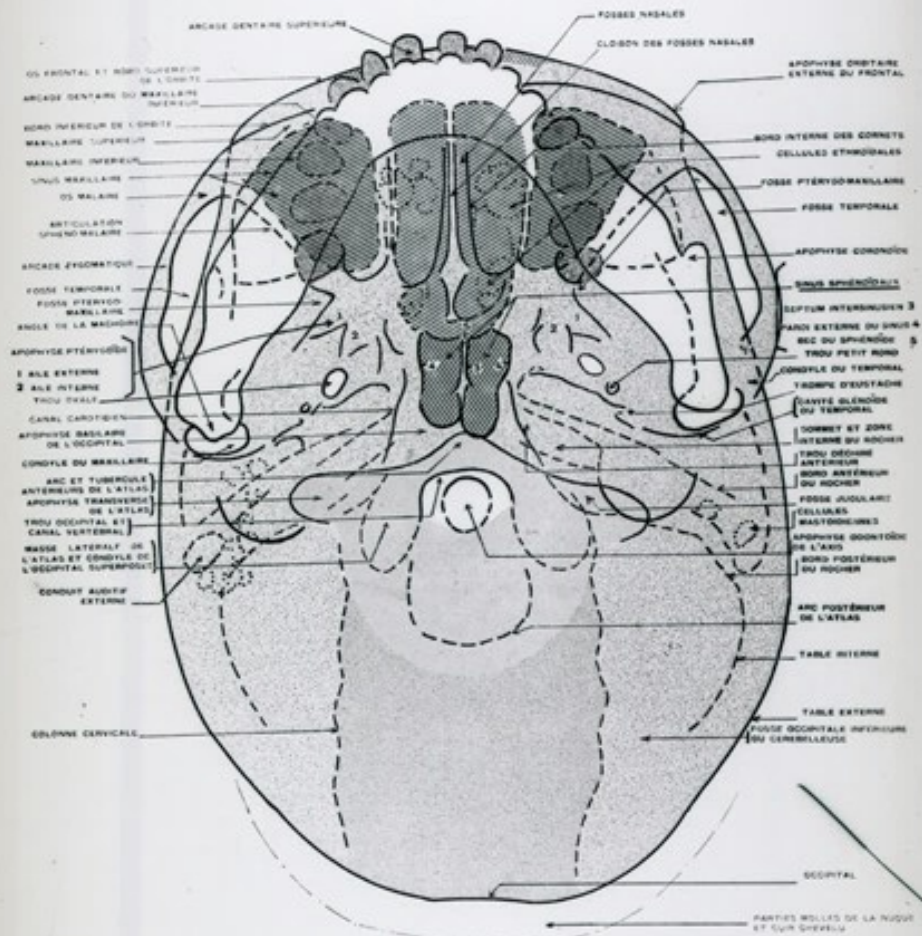
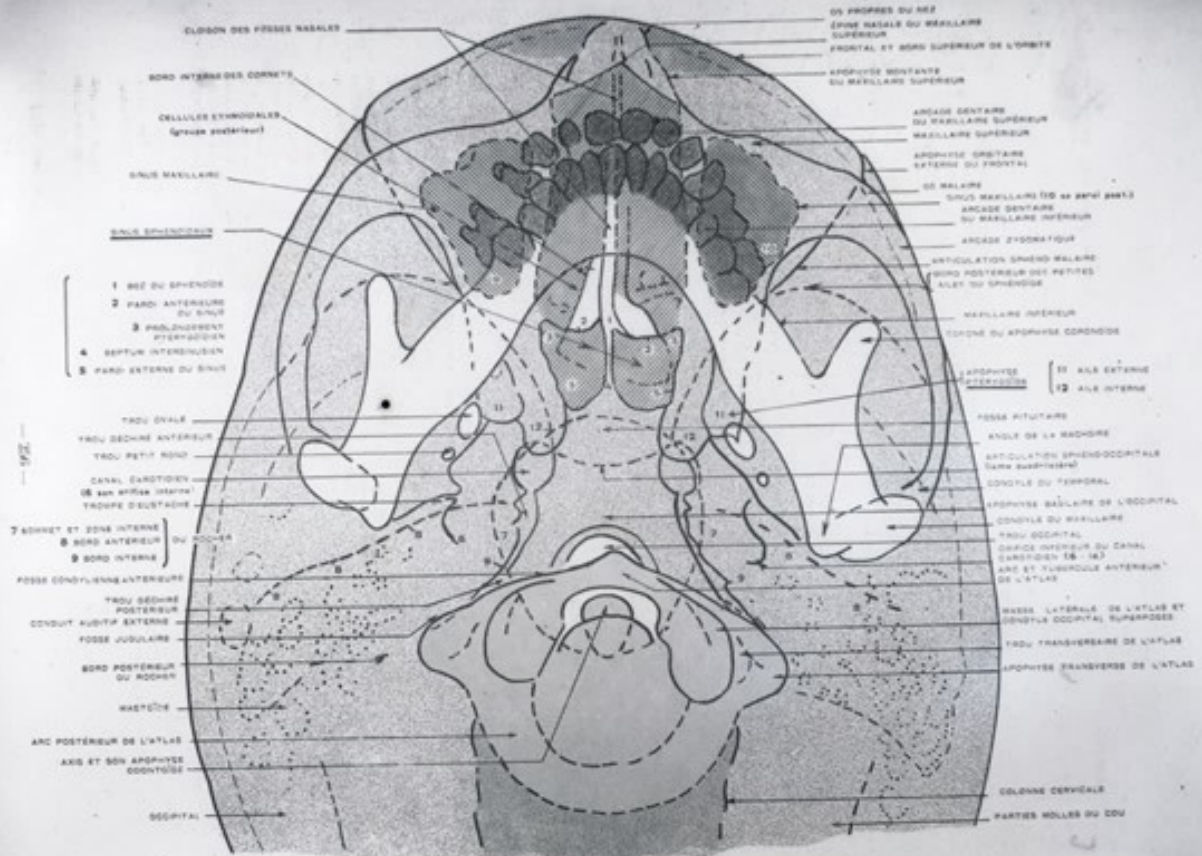


Planche 77-1. Schéma.



Pianche 76-II. Schéma.

Anatomie radiographique

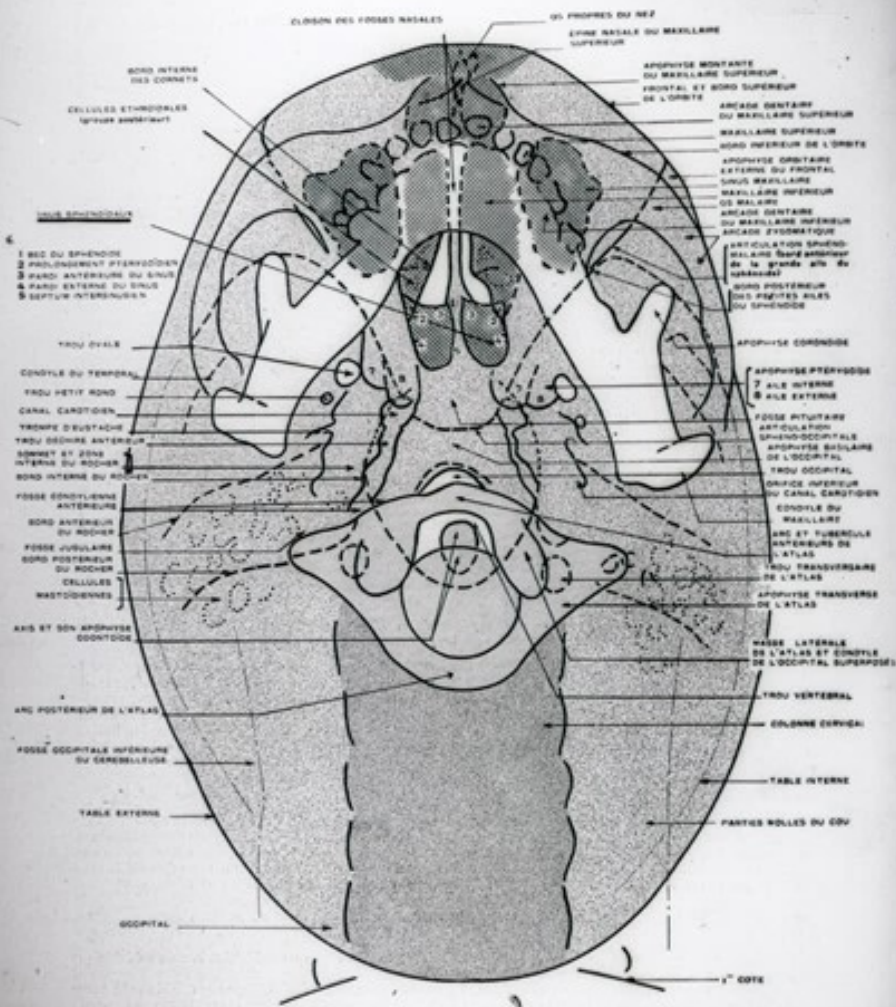


Planche 75-1. Schéma.

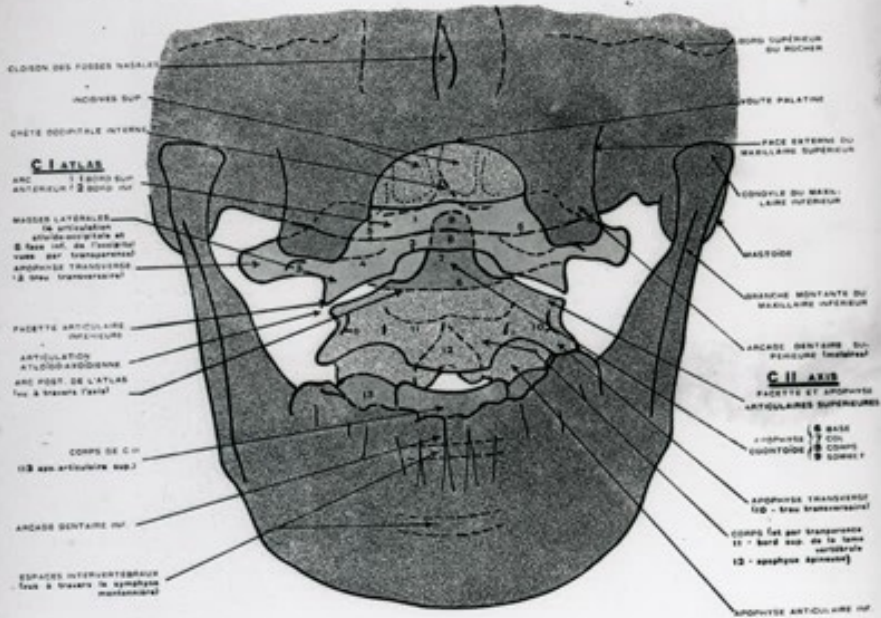


Planche 88-1. Schéma.

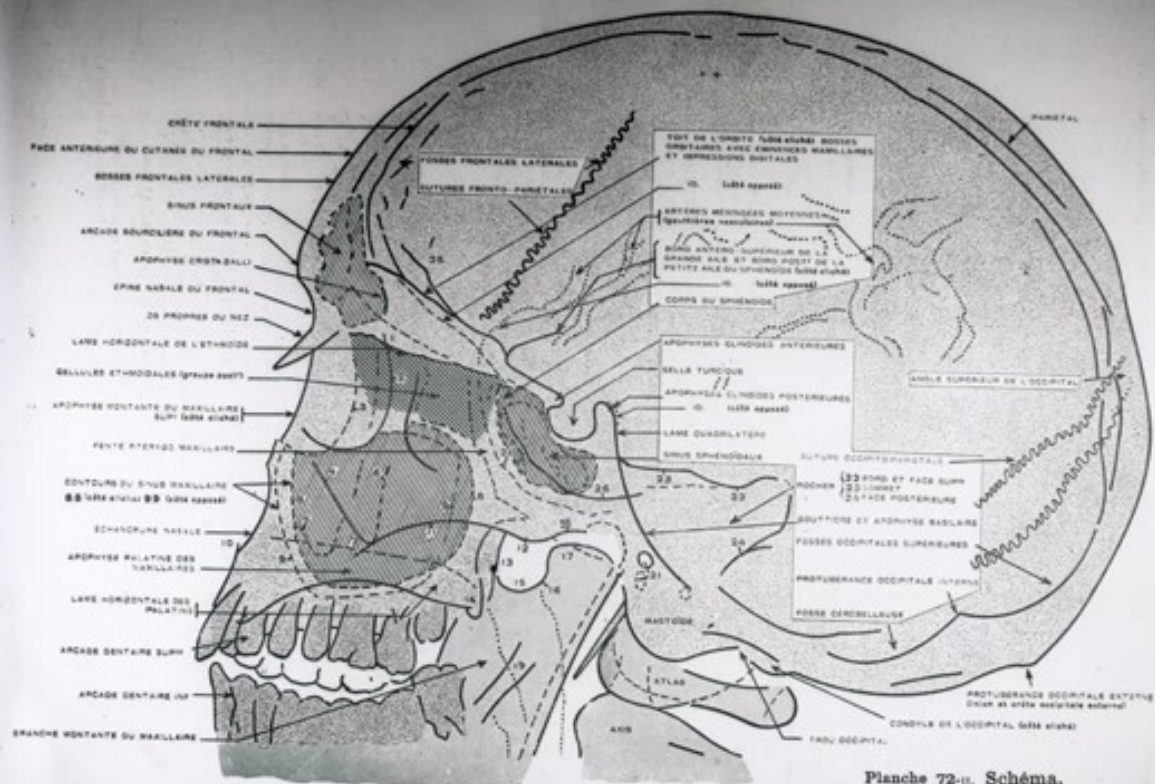


Planche 72-II. Schéma.

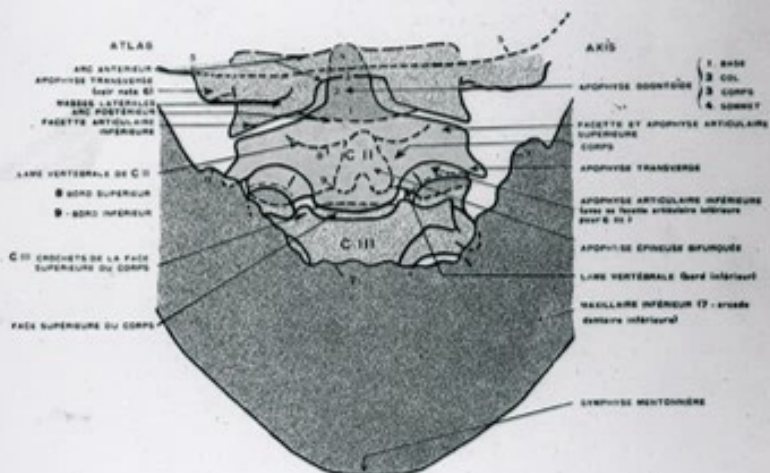
1. Arcade orbitaire du frontal.
 2. Bord ext. de l'orbite (côté cliché).
 3. — (côté opposé).
 4. Os malaire face ant. (côté cliché).
 5. — (côté opposé).

6. Os malaire face post. (côté cliché).
 7. Apophyse pyramidale du maxillaire (côté cliché).
 8-9. Voir figure.
 10. Épine nasale du maxillaire sup.

11. Arcade zygomatique.
 12. Condyle du temporal.
 13. Apophyse ptérygoidé (ail. ext.).
 14. — (ail. int.).
 15. Échancrure sigmoïde

16. Côté du condyle.
 17. Condyle du maxillaire.
 18. Cavité glénoïde du temporal.
 19. Gouttière mylo-hyoïdienne.
 20. Face antérieure du sphénoïde

21. Conduits auditifs externes (D.G.).
 22-23-24. Voir figure.
 25. Étage antérieur de la base du crâne.
 26. Fosse cérébrale moyenne.



5. Face inférieure de l'occipital.
 6. Les apophyses transverses de l'Atlas sont ici masquées par l'arcade dentaire supérieure.

Planche 89-1. Schéma.

Anatomie radiographique

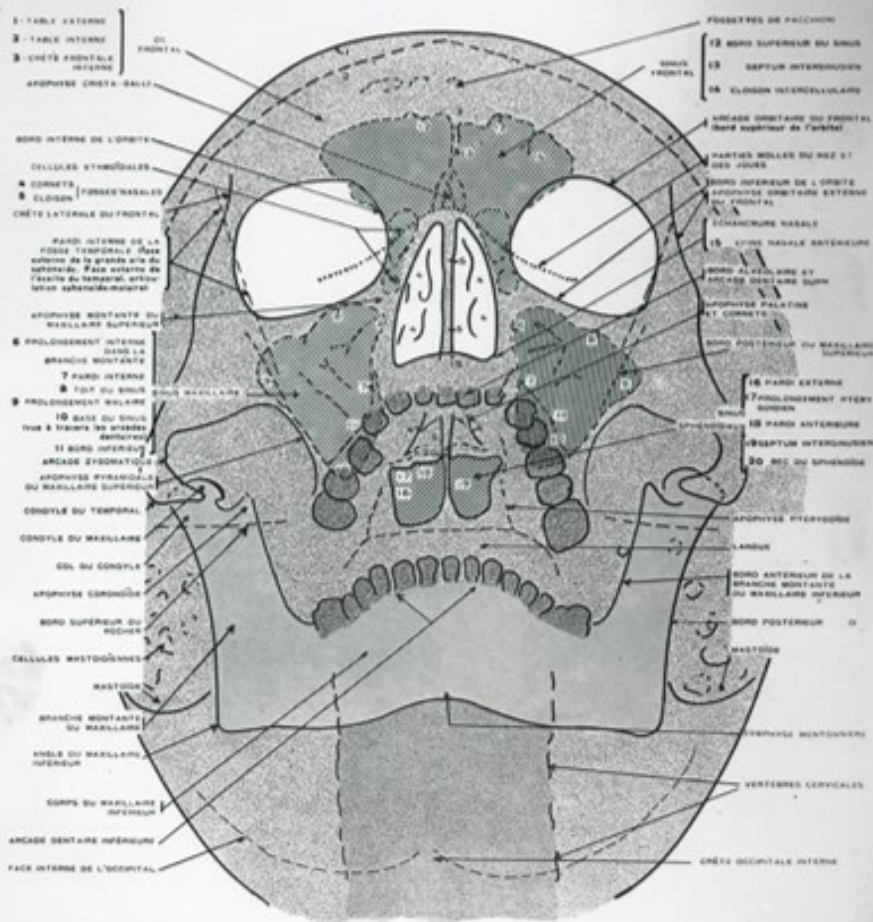


Planche 78-1. Schéma.

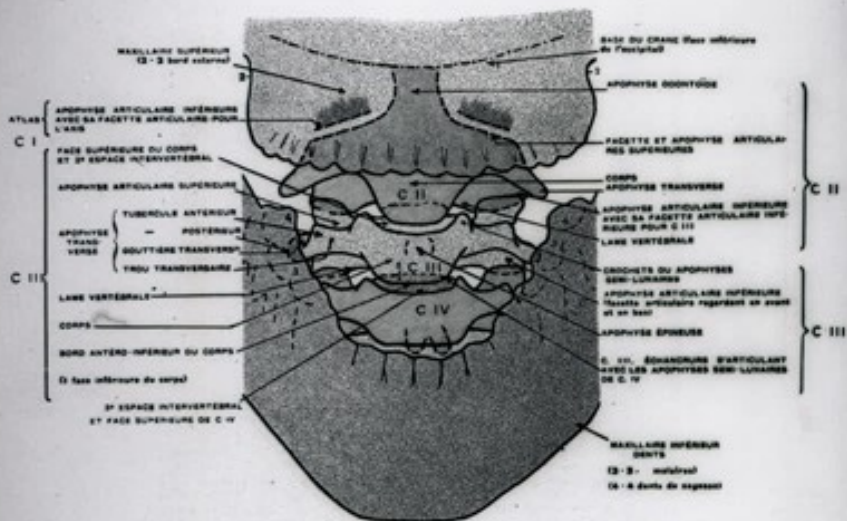


Planche 90-1. Schéma.

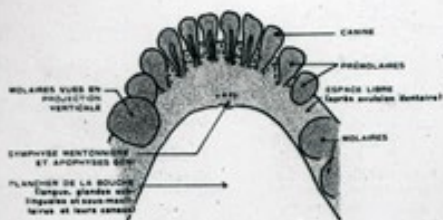


Planche 86-1. Schéma.



Planche 86 bis-1. Schéma.

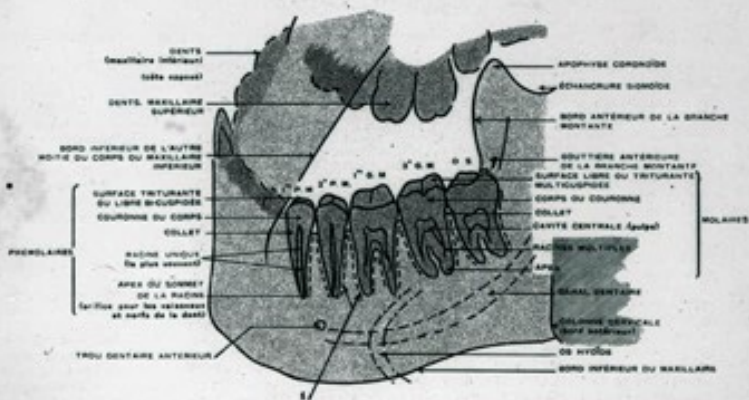


Planche 87-1. Schéma.

Note 1. Articulations alvéolo-dentaires.

Abréviations employées : 1^{re} P. M. : 1^{re} pré-molaire. | 1^{re} G. M. : 1^{re} grosse molaire. | D. S. : dent de sagesse.
 2^e P. M. : 2^e pré-molaire. | 2^e G. M. : 2^e grosse molaire.

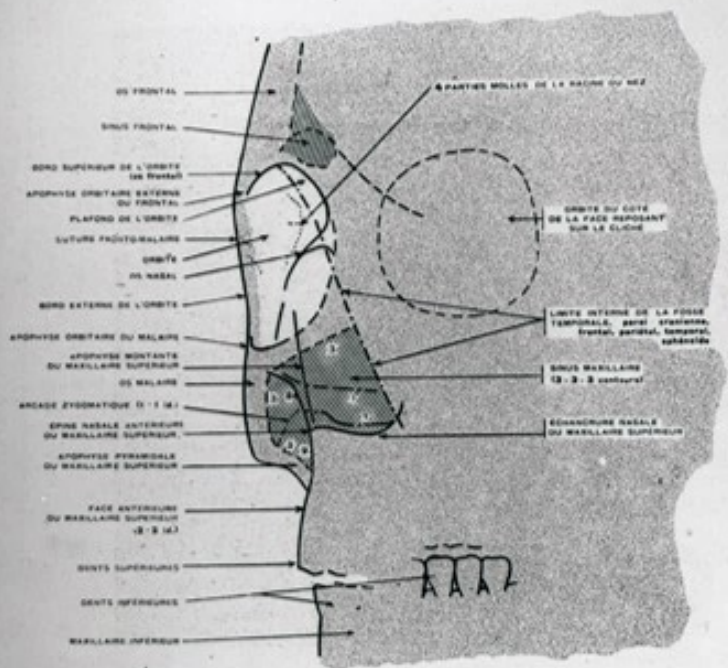
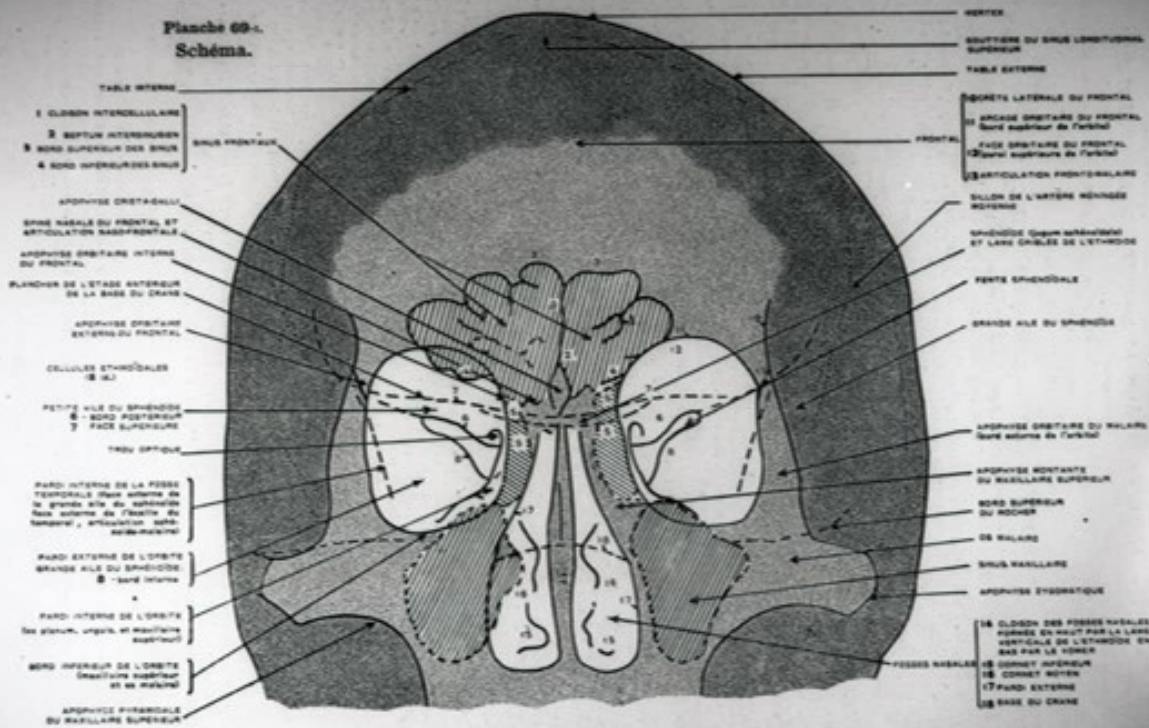
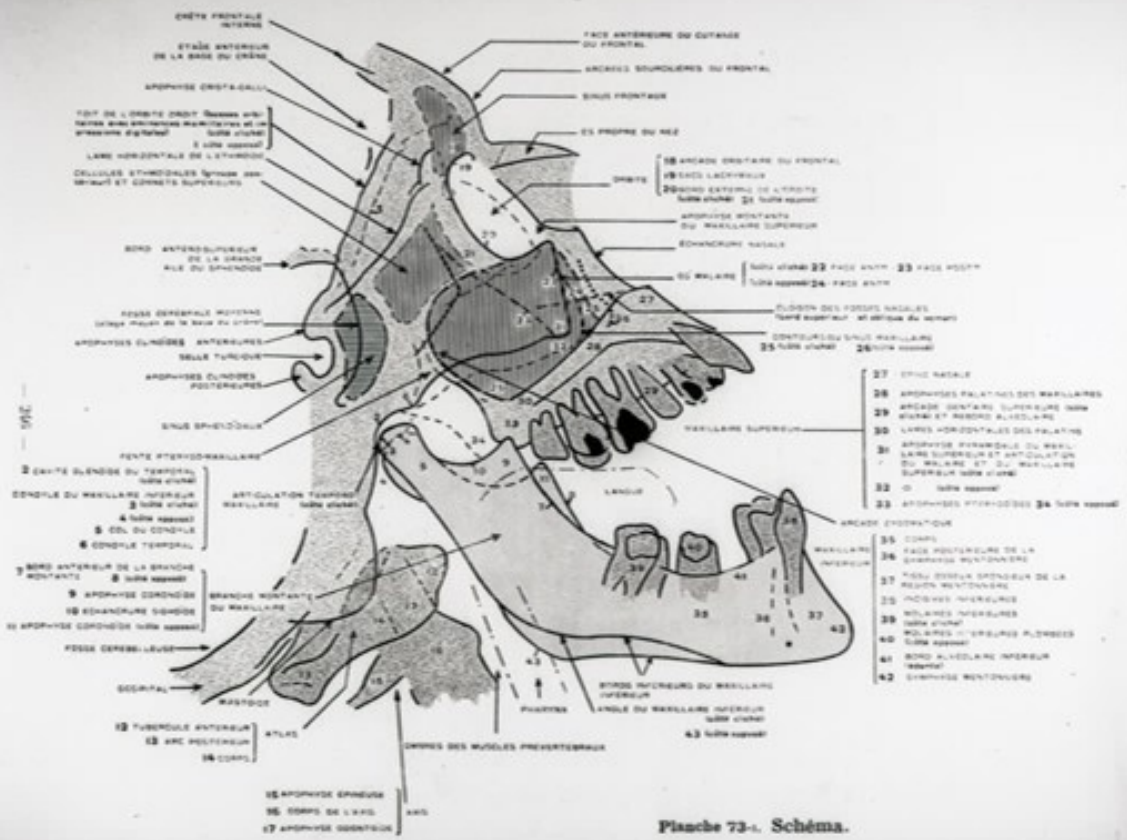


Planche 74-r. Schéma.

Planche 69-1.
Schéma.





A. noctule - *myotis myotis*

Planche 73-c. Schéma.

63-15-1889

6-139





6-130

6-15-1948



6-11-11

6-15-1948



6-145

2-15-1928

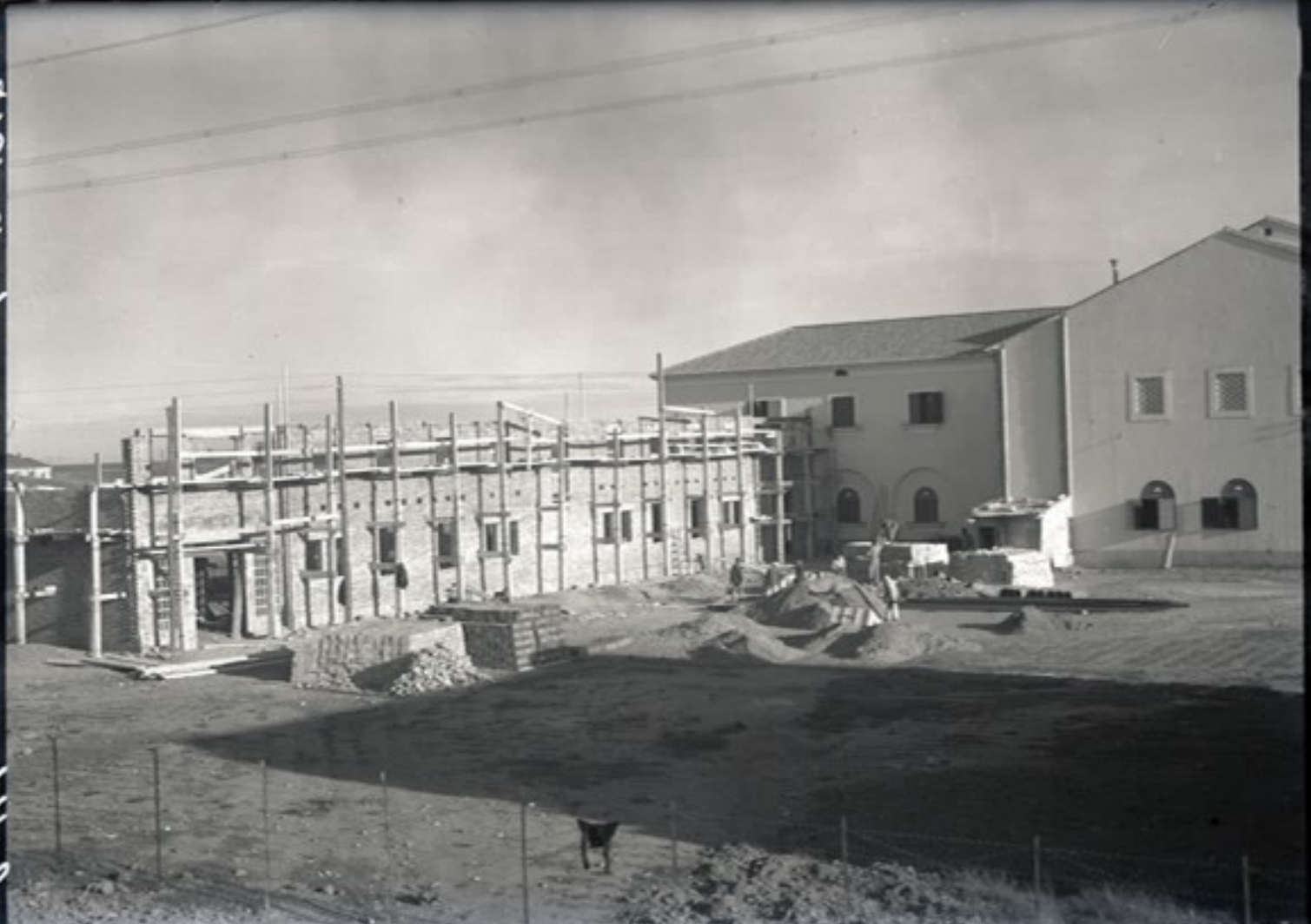
9-191-51-61



6-133

8791-51-6

241-9





10-15-1928

1-1-1928

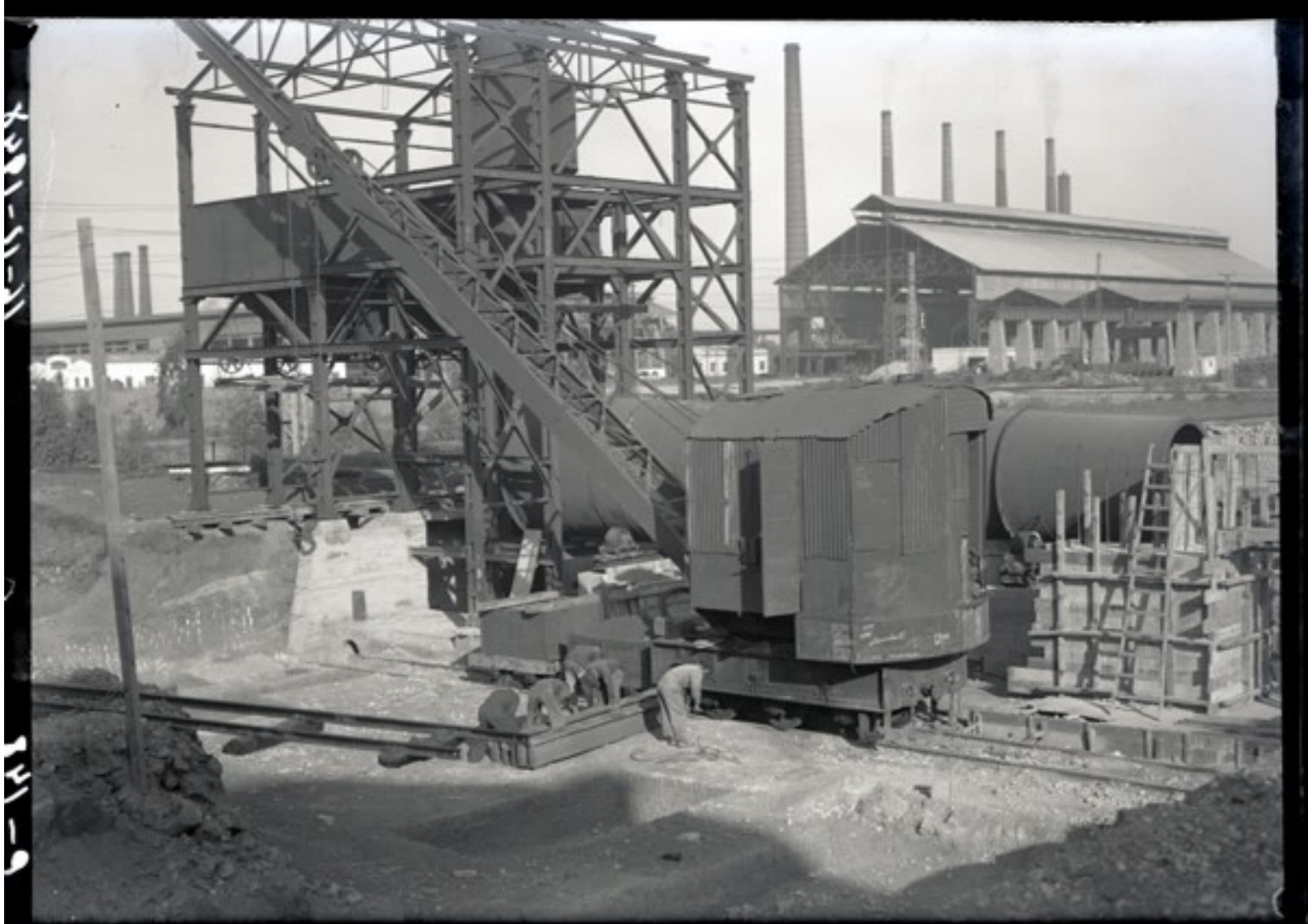


10-15-1945



100-100-1

41-9







1-120

19-15-1888

10-15-1928

6-121



6-125

19-15-1048





6-12-1913

11-11-1913





6-122

14-15-1948